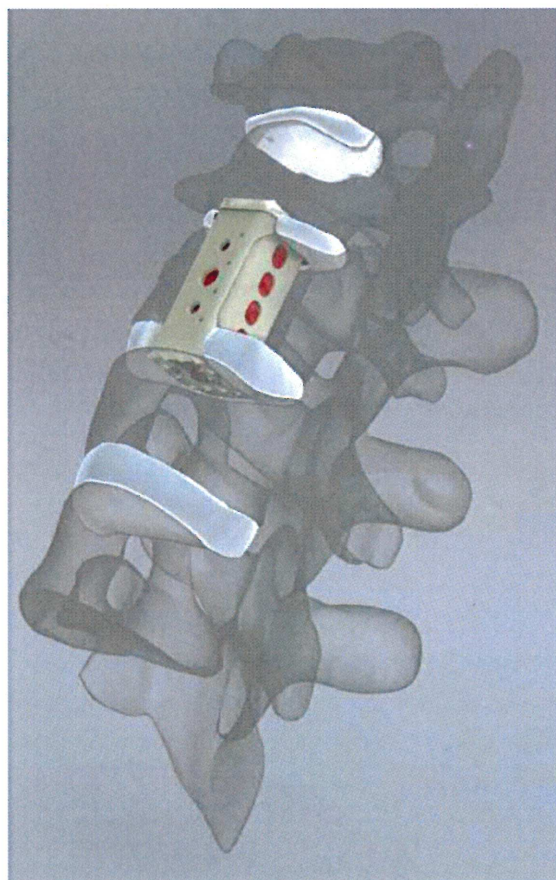




Vu•Mesh™

« PEEK-OPTIMA® Vertebral Body Replacement



The Vu Mesh™ Vertebral Body Replacement (VBR)

System exemplifies the company's commitment to their longstanding design philosophy; "Fewer Parts, Fewer Steps." The Vu Mesh™ VBR System contains easy to use radiolucent PEEK-OPTIMA® implants that eliminate time consuming cutting and contouring.

The Vu Mesh™ VBR System is designed to increase the speed, ease, and reliability of the corpectomy procedure by offering a wide variety of length options (0.5mm increments) in two popular foot prints to accommodate a broad spectrum of patient anatomies.

The Vu Mesh™ VBR System provides intra-operative flexibility with parallel or angulated endplates (0°, 2.5°, 5°, 7.5°) that support lordotic or kyphotic configurations.

The Vu Mesh™ VBR System incorporates a number of engineering features that make this system unique including a rectangular design that provides greater resistance to torsion/shear while providing 100% more surface area to prevent subsidence.

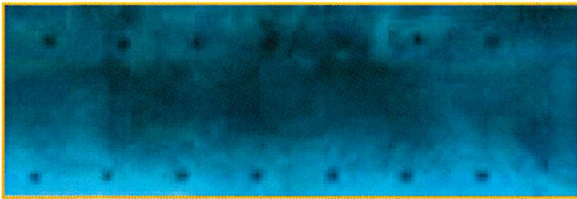
Headquarters 1800 Triplett Blvd. Akron, OH 44306 | Ph 866.942.8698 | Fax 330.773.7697

info@thekenspine.com | www.integraspine.com

**INTEGRA™**
S p i n e

Vu•Mesh™

« PEEK-OPTIMA® Vertebral Body Replacement



▲ Fluoroscopy demonstrating Ossification of graft material inside Vu Mesh cage (Black dots represent tantalum markers)

System Specifications

CAGES

Profiles 12mm² and 14mm²

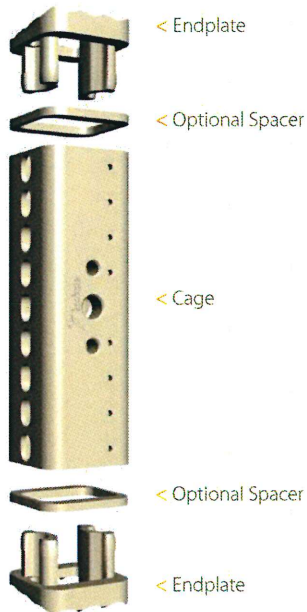
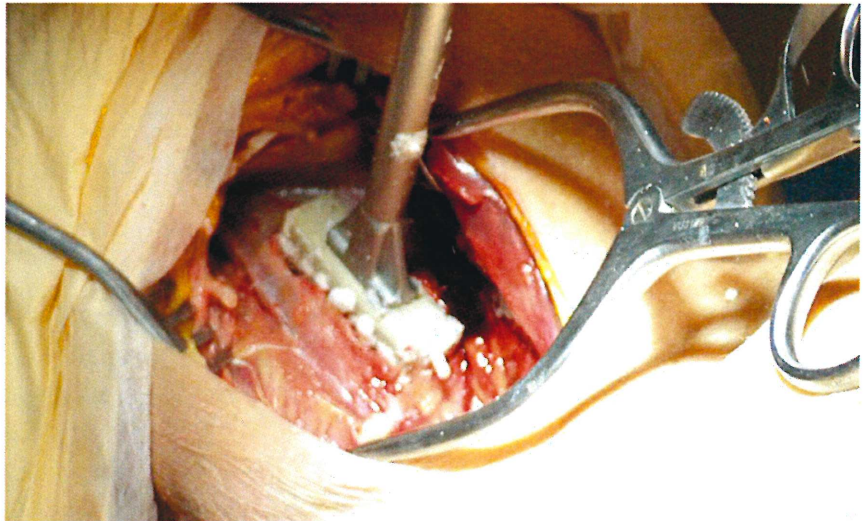
Lengths 10mm–70mm (in 5mm increments)

SPACERS (OPTIONAL)

Heights 1mm, 1.5mm, 2.0mm, 2.5mm

ENDPLATES

Angulation 0°, 2.5°, 5.0°, 7.5°



A full range of anatomically precise sizing options in 0.5mm increments increases intra-operative efficiency through the elimination of cutting or grinding an implant to the desired length. The assembly of the PEEK components eliminates waste and cost associated with over-cutting of allograft struts or titanium mesh cages.

A basic instrument set centered on an intuitive insertion tool makes the procedure straightforward and quick.

Patent Pending.

PEEK-OPTIMA®

PEEK-OPTIMA® LT is a safe, biocompatible and stable polymer. Its radiolucent properties make it virtually invisible to x-rays, showing only the strategically placed tantalum marker beads. As an alternative to bone struts, PEEK-OPTIMA® has no adverse effects on the surrounding tissue or healing process.

About Integra Spine

Integra Spine is a leading provider of fusion implants and orthobiologics used in spinal surgery. Integra Spine is actively developing motion preservation devices and provides a comprehensive product line from occiput to sacrum.

PEEK-OPTIMA® is a registered trademark of Invibio Limited

www.integraspine.com

