

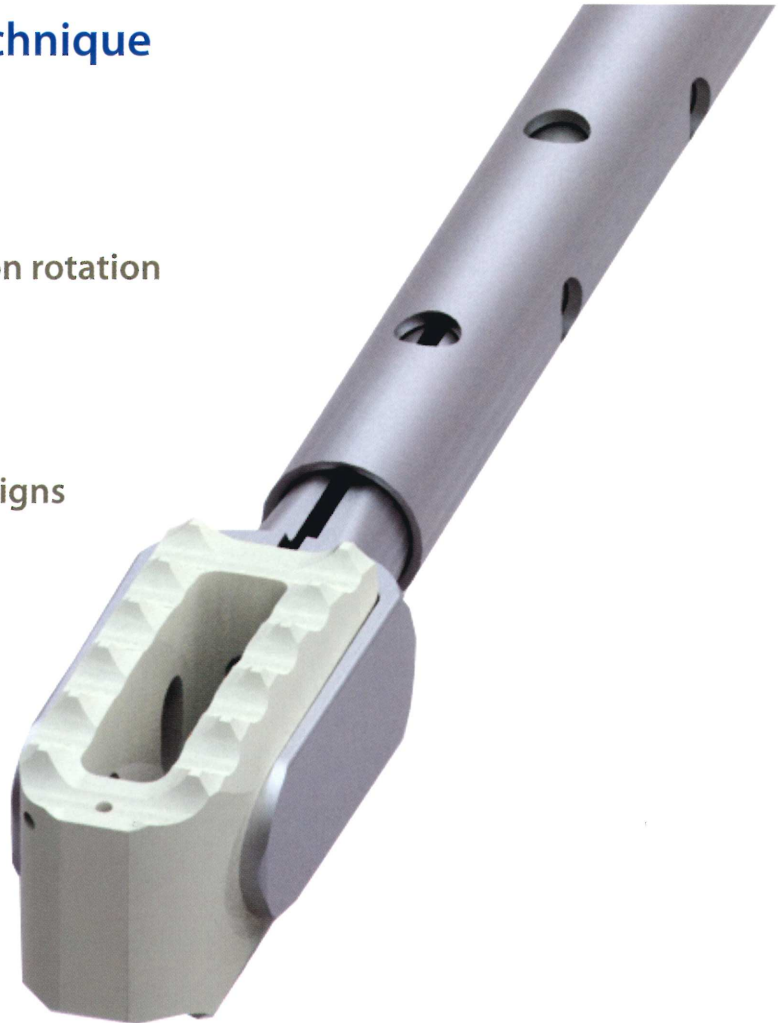
# Vu e•POD™

« Posterior Lumbar Intervertebral  
Body Fusion Device



## All-in-one Insertion/Distraction Technique

- > Bullet-shape tip
- > 1mm increment sizes
- > Gains 2mm of distraction upon rotation
- > Ultimate graft area
- > PEEK-OPTIMA®\*\*
- > Tapered and non-tapered designs
- > Three lengths



Headquarters 1800 Triplett Blvd. Akron, OH 44306 | Ph 866.942.8698 | Fax 330.773.7697

spine.info@integra-ls.com | [www.integraspine.com](http://www.integraspine.com)

 **INTEGRA™**  
S p i n e



# Vu e-POD™

« Posterior Lumbar Intervertebral  
Body Fusion Device



## System Features\*

### NON-TAPERED IMPLANTS

Heights 8-16mm (1mm increments)

Lengths 22mm, 26mm, and 30mm

### 5° TAPERED IMPLANTS

Heights 8-16mm (1mm increments)

Lengths 22mm and 26mm

### 10° TAPERED IMPLANTS

Heights 10-16mm (1mm increments)

Lengths 22mm and 26mm

\*9, 11, 13 and 15mm heights are available by request only

### All-in-one Insertion / Distraction Technique

The Vu e-POD™ Intervertebral Body Fusion Device (IBD) is inserted using a patented rotational technique.\* The implant is inserted on its side and rotated 90° to give an additional 2mm of distraction (the implant measures 2mm less in its width than in its maximum height).

### Optimum Graft Area Promotes Fusion

The Vu e-POD™ IBD rectangular shape increases area for autograft packing in and around the implant, which improves bone fusion. The 3-D convex surfaces conform to the vertebral endplate, and are coupled with aggressive teeth that grip the endplates, providing strong structural support to resist rotation and migration.

### PEEK-OPTIMA®

The properties of PEEK-OPTIMA® are ideal for spinal implants. Its modulus of elasticity is between cortical and cancellous bone. Additionally, it provides high compressive strength.

### Radiolucent

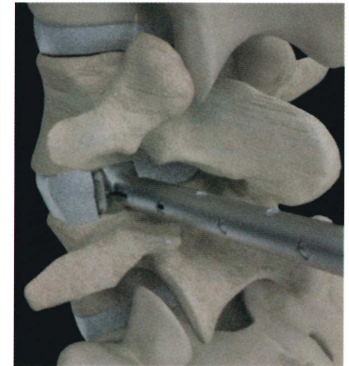
PEEK-OPTIMA® material enables surgeons to better ascertain if fusion is occurring.

### Versatility

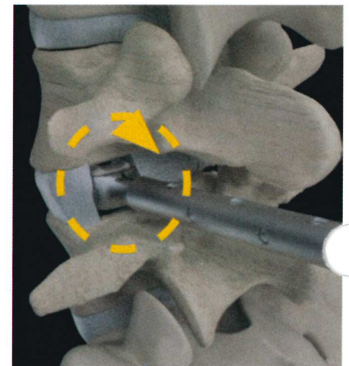
The Vu e-POD™ IBD includes tapered and non-tapered implants in a range of footprints and heights ideal for most applications.

\*U.S. Patent No. 6,290,724 licensed from NuVasive, Inc.

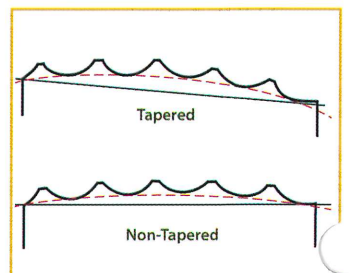
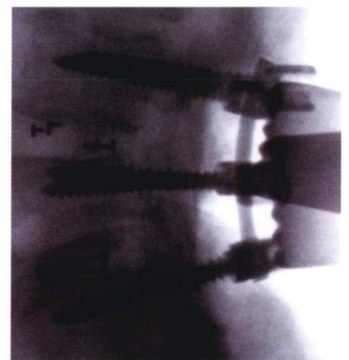
\*\*PEEK-OPTIMA® is a registered trademark of Invivo, used with permission



Step 1 - Insert



Step 2 - Rotate



## About Integra Spine

Integra Spine is a leading provider of fusion implants and orthobiologics used in spinal surgery. Integra Spine is actively developing motion preservation devices and provides a comprehensive product line from occiput to sacrum.

[www.integraspine.com](http://www.integraspine.com)

