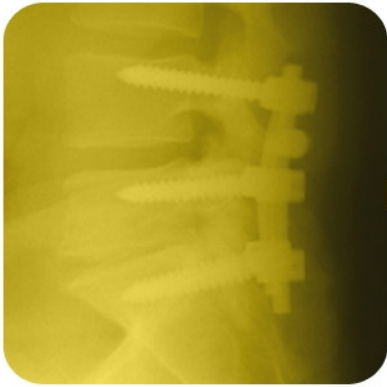


Coral™

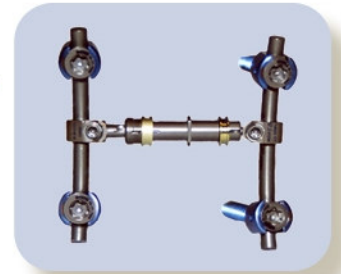
Pedicle Screw System



Better Visualization of Anatomy

Low Profile Design

Coral is one of the lowest profile designs on the market.



Polyaxial screw seats
14.5mm(H) x 13.5mm(W) x 10.5mm(L)



Streamline Surgical Technique

Innovative Implant

and Instrument Design

Patent-pending pre-timed threaded nut eliminates the tendency of cross threading.



Easy-to-see marks indicate threaded nut alignment

Versatility

Wide Array of Implant Types and Sizes

The versatility of the system lends itself to rod rotation or translation, segmental correction and in situ rod contouring methods.



Polyaxial and Standard Screws
lengths range from 25mm-65mm

The Coral Pedicle Screw System was designed with the surgeon and patient in mind. It streamlines the surgical technique with fewer parts and fewer surgical steps. The engineers at Theken Spine worked closely with a group of surgeon advisors. By incorporating their input into the Coral System, Theken designed one of the most surgeon-friendly pedicle screw systems on the market.



Theken utilized in-house FEA computerized modeling to design one of the lowest profile screw heads. Through this modeling, Theken was able to reduce splaying and the size of screw head without compromising strength.

System Specifications

The Coral Pedicle Screw System is indicated for stabilizing the spine from T1-Sacrum and is intended for non-cervical use.

Screw Options

Polyaxial

Diameters: 4.5mm, 5.5mm, 6.5mm, 7.5mm

Lengths: 25mm-65mm

Standard

Diameters: 4.5mm, 5.5mm, 6.5mm, 7.5mm, 8.5mm

Lengths: 25mm-65mm

Rod Options

Straight

Lengths: 30mm-400mm

Pre-Lordosed

Lengths: 30mm-80mm

Cross Connector Options

Adjustable

Sizes: Small, Medium, Large

Fixed

Sizes: 10mm-30mm

